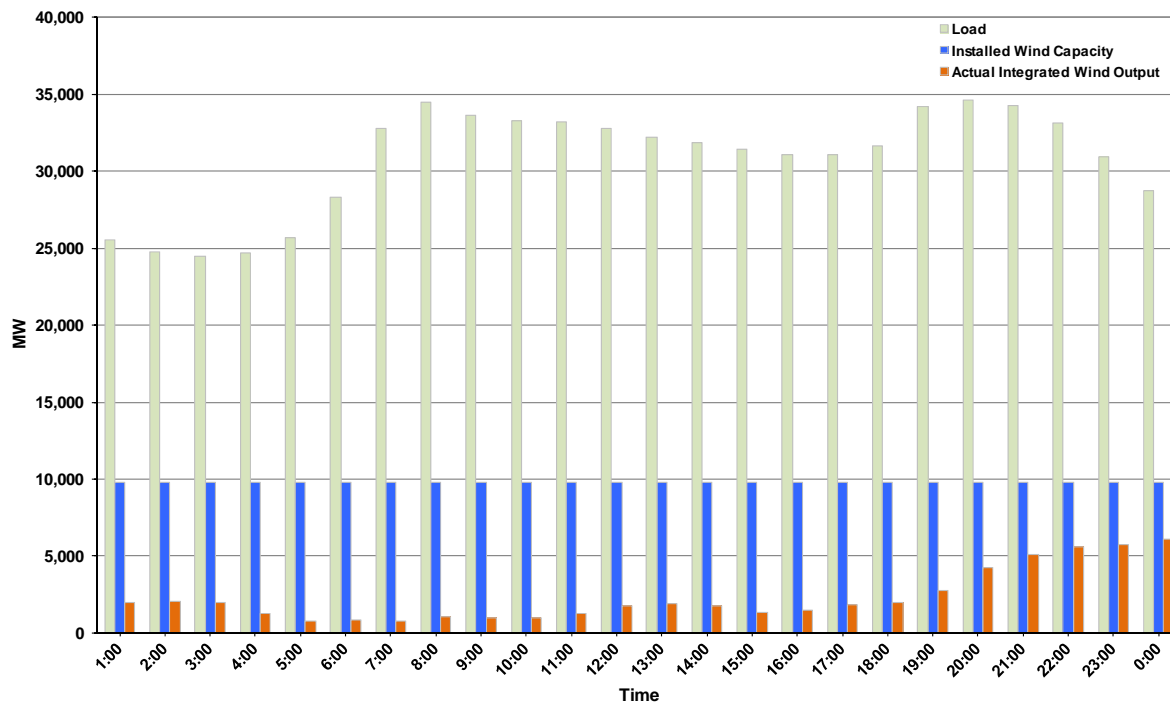




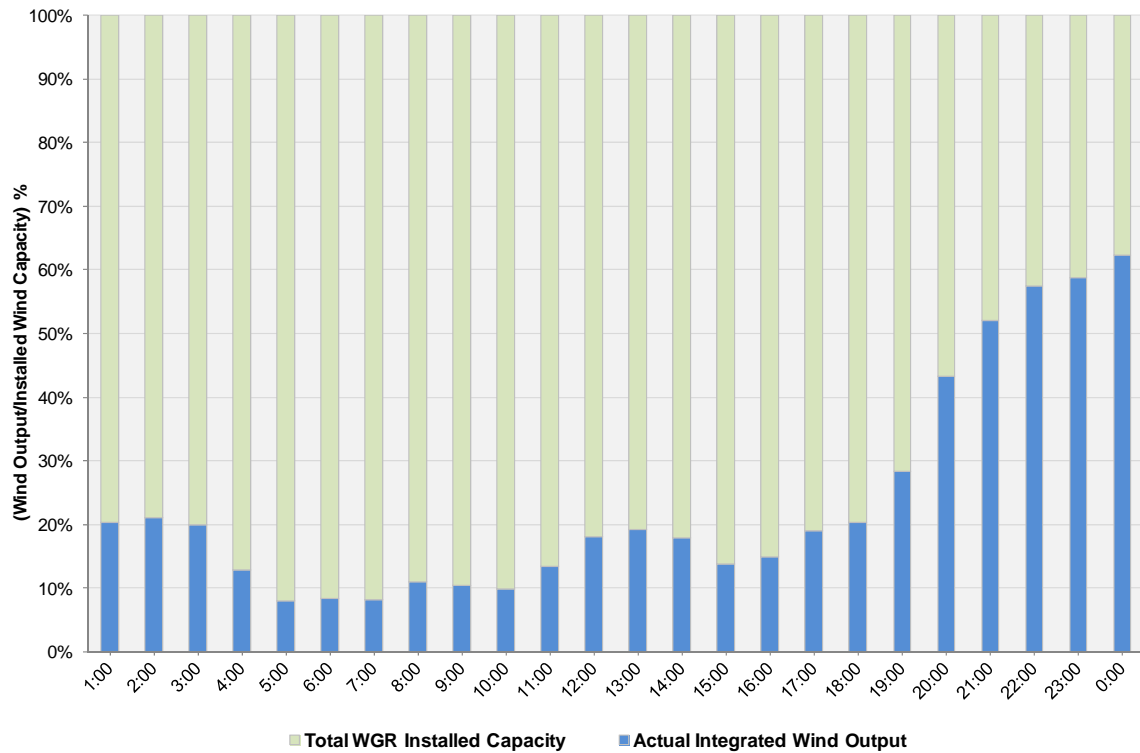
ERCOT Grid Operations Wind Integration Report: 01/23/12

Peak Load	34,648 MW
Load Peak Hour (HE)	20
Wind over Peak	4,238 MW
Wind Record 10/07/11	7,400 MW
Max Wind Value	6,290 MW
Wind Peak Time	22:55
Wind Integration %	21.05%

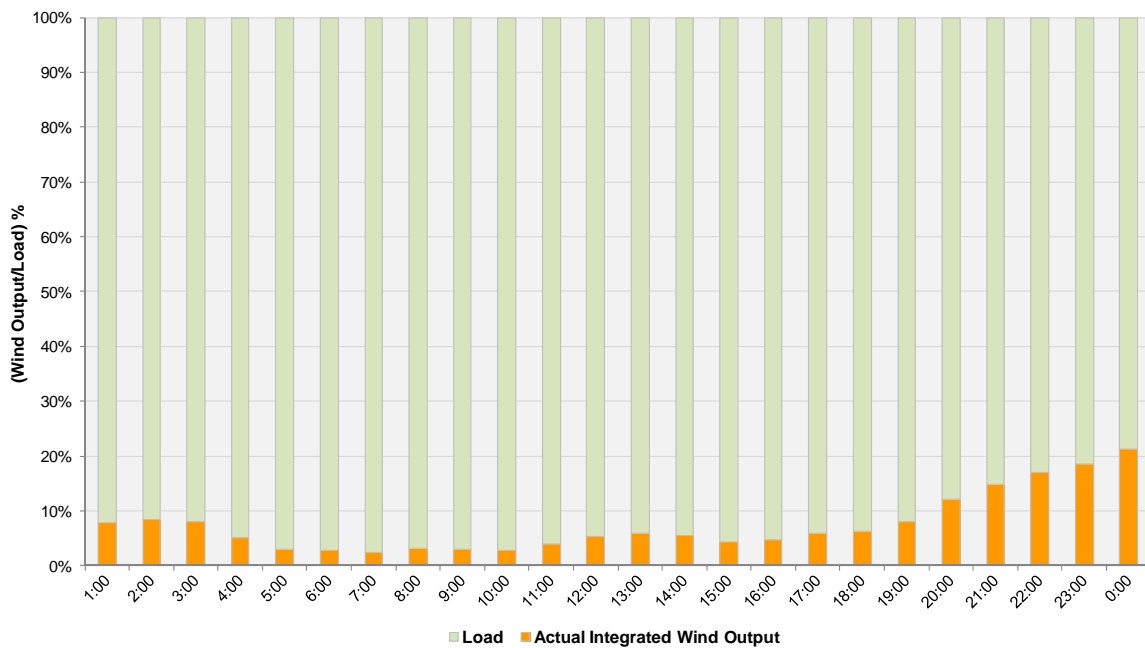
**Hourly Average Actual Load vs. Actual Wind Output
01-23-2012**



Actual Wind Output as a Percentage of the Total Installed Wind Capacity
01-23-2012



Actual Wind Output as a Percentage of the ERCOT Load
01-23-2012



ERCOT Load vs. Actual Wind Output 1/16/2012 - 1/23/2012

